

High Wycombe Accommodation Guide 2013

Hotels

The Chequers Inn Hotel ***

Kiln Lane
Wooburn Common
Buckinghamshire HP10 0JQ

Tel: 01628 529575
Email: info@chequers-inn.com
Visit: www.chequers-inn.com

Steeped in history, this family-run 17th Century coaching inn is renowned for its 2AA Rosette Restaurant, delicious bar food and summer BBQ 's. 17 beautifully appointed, individually designed bedrooms.

14 Double Rooms from £90
2 Twin Rooms from £90
1 Family Room from £140



Clifton Lodge Hotel ***

210 West Wycombe Road
High Wycombe
Buckinghamshire HP12 3AR
Tel: 01494 440095
Email: enquiries@cliftonlodgehotel.com
Visit: www.cliftonlodgehotel.com

Friendly, family run guest accommodation close to commercial centres in High Wycombe. Free onsite parking. Each room has en-suite facilities.

Single Rooms from £55
Twin and Double Rooms from £65
Family Rooms from £85
Executive Rooms from £70 per person



De Vere Uplands House

4 Ashes Road
High Wycombe
Buckinghamshire HP15 6LB
Tel: 0844 9802320
Email: uplreception@deverevenues.co.uk
Visit: www.deverevenues.co.uk

Classical mansion house set amidst beautiful Chiltern countryside and landscaped gardens overlooking the Hughenden Valley. 74 en-suite rooms with FREE internet access and TV. Mini-gym, pitch and putt and croquet available in the Summer months.

For room rates please contact the De Vere Venues Reservations Team



Holiday Inn-High Wycombe

Junction 4, M40, Handy Cross
High Wycombe
Buckinghamshire HP11 1TL

Tel: 0871 9429042
E: reservation-highwycombe@ihg.com
Visit: www.hihighwycombehotel.co.uk

Modern hotel with Standard, Executive and accessible bedrooms. Dedicated lounge/bar and Junction restaurant. HD flat screen TV throughout.

For room rates please contact the Holiday Inn Reservations Team



Premier Inn- Central

Archway
High Wycombe
Buckinghamshire HP13 5HL
Tel: 0871 5279326
E: Via Website
Visit: www.premierinn.com

Ideally located in the centre of High Wycombe with easy access to London, High Wycombe Central is close to the main shopping area and only 7 minutes walk to the main line train station. All you can eat breakfast is also available from the Hotel Restaurant.

For room rates please contact the Premier Inn reservations team



Hotels continued...

Premier Inn

London Road, Loudwater
High Wycombe
Buckinghamshire HP10 9YL
Tel: 0871 5279326
E: Via Website
Visit: www.premierinn.com

A convenient location just 3 miles from both High Wycombe town centre and train station. Ideally positioned within easy reach of the M40, junction 3. FREE Parking.

For room rates please contact the Premier Inn reservations team



Travelodge

Octagon Parade
High Wycombe
Buckinghamshire HP11 2DQ
Tel: 0871 9846493
E: Via Website
Visit: www.travelodge.co.uk

Ideally located in the heart of the town centre within easy reach to all of the area's attraction. Each room includes a TV, tea and coffee making facilities, sheets and towels.

For room rates please contact the Travelodge Reservations Team



The Tree Hotel

Marlow Road, Cadmore End
Stokenchurch
Buckinghamshire HP14 3PF

Tel: 01494 881183
E: cadmore@treehotel.co.uk
Visit: www.treehotel.co.uk

The Tree Hotel at Cadmore End has 16 en-suite bedrooms-many with comfortable super king size beds, guaranteeing a good night's rest. You will receive a lovely warm welcome and a delicious breakfast complete with English, Continental and International options.

For room rates please contact The Tree Hotel



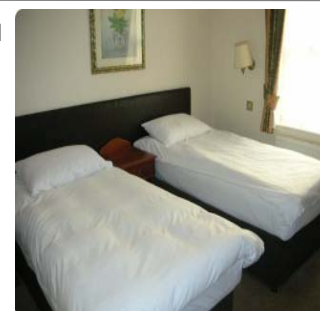
Abbey Lodge Hotel

Priory Road
High Wycombe
Buckinghamshire HP13 6SL

Tel: 01494 471013
E: reservations@abbeylodgehotel.co.uk
Visit: www.abbeylodgehotel.co.uk

The Hotel provides high quality service and a relaxed place to stay for business and leisure visitors, together with a convenient location for motorway and rail links to London and other centres. FREE parking available.

3 Single Rooms (£40 to £75)
6 Twin Rooms (£49 to £89)
22 Double Rooms (£49 to £89)



Belmont Hotel

9 and 11 Priory Avenue
High Wycombe
Buckinghamshire HP11 6SQ

Tel: 01494 527046
Visit: www.belmonthotel.biz

The Belmont Hotel is a small B&B Hotel with 18 rooms, located within walking distance of the Town Centre with convenient access to the rail, bus and road systems. Free parking included.

Single Rooms from £30
Twin Rooms from £50
Double Rooms from £50



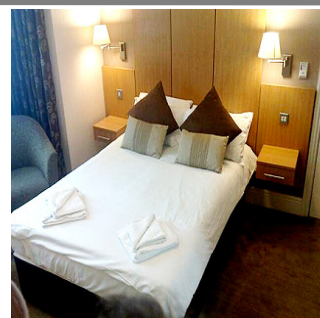
Buckingham Hotel

156 West Wycombe Road
High Wycombe
Buckinghamshire HP12 3AE

Tel: 01494 474747
Email: info@buckinghamhotels.co.uk
Visit: www.buckinghamhotels.co.uk

The Buckingham Hotel is considered one of the most stylish and comfortable hotels within the area. With excellent services and rates, be assured that your stay will be pleasant and relaxed.

Single Room from £37
Twin Room from £57
Family Room from £77
Apartment from £77



Hotels continued...

Fox Country Inn

Ibstone
High Wycombe
Buckinghamshire HP14 3XT

Tel: 0845 643 9933
E: info@foxcountryinn.co.uk
Visit: www.foxcountryinn.co.uk

If you're looking for an affordable yet comfortable B&B then Fox Country Inn may be just right for you. Rooms are furnished to a modern standard and you'll find the environment restful and friendly. This is also a pet friendly hotel.

For room rates please contact the Fox Country Inn Reservations Team



George and Dragon

High Street
West Wycombe
Buckinghamshire HP14 3AB

Tel: 01494 535340
E: bookings@georgeanddragonhotel.com
Visit: www.georgeanddragonhotel.com

A range of characterful and comfortable bedrooms available, including rooms with four-poster beds. All bedrooms have en-suite bathrooms and tv, as well as direct-dial telephones and tea and coffee making facilities. Single occupants, couples and families and pets welcome.

For room rates please contact the George and Dragon



Kings Hotel

Oxford Road
Stokenchurch
Buckinghamshire HP14 3TA

Tel: 01494 609090
Email: reservations@kingshoteluk.com
Visit: www.kingshoteluk.com

The Kings Hotel is your ideal choice for accommodation in the High Wycombe area. As well as offering the ultimate in comfort, cuisine and leisure, The Kings Hotel provides the perfect venue. FREE parking.

Single Occupancy from £125
Double Occupancy from £155
Executive Room from £175



Guest Houses and B&B's

Forge House ***

10 Church Street
Great Missenden
Buckinghamshire HP16 0AX

Contact: Mrs J Lock
Tel: 01494 867347

Set in the wooded Chiltern Hills, quiet village location, a charming 18th Century beamed house with three en-suite bedrooms all with microwave and fridge. English/continental breakfast included.

2 Double Rooms and 1 Twin Room
Single Occupancy from £31
Double Occupancy from £62



Katsina **

Broomstick Lane
Botley, Chesham
Buckinghamshire HP15 1XU

Tel: 01494 773110
Contact: Mrs P Jeffrey
Visit: www.katsina.co.uk

Friendly chalet bungalow in a quiet country location. Easy access to ground floor rooms. Pubs and Golf Course nearby. Private parking for two cars/small vans. Attractive area for walkers and cyclists.

2 Twin Rooms
Single Occupancy from £50
Double Occupancy from £70



Longforan B&B ****

Magpie Lane
Flackwell Heath
Buckinghamshire HP10 9EA

Contact: Mrs C Lawrence
Tel: 01628 525178/ 07704159445
E: bedbreakfasthighwycombe@hotmail.co.uk
Visit: www.bedandbreakfasthighwycombe.co.uk

Warm welcome, wholesome breakfast and comfortable night's sleep in spacious family home with lovely garden. All rooms with private shower/toilet. Free Wi-Fi.

1 Single Room from £43
1 Double Room from £48/£68
1 Twin Room from £48/£68



Guest Houses and B&B's Continued...

Lower Bassibones Farm

Lee Common, Great Missenden
Buckinghamshire HP16 9LA

Contact: Mrs A Hartley

Tel: 01494 837798

E: lowerbassibones@yahoo.co.uk

Visit: www.discover-real-england.com

Accommodation comprises large, self contained double rooms with either a private or shared luxury shower room situated in the main farmhouse. Each room has TV/DVD player, FREE WIFI. Both rooms have views across the gardens and farmland.

2 Double Rooms from £65/£75

1 Family Room from £95

Full English Breakfast £7 (please give 24 hours notice)



The Nags Head Inn

London Road
Great Missenden
Buckinghamshire HP16 0DG

Tel: 01494 862200

E: goodfood@nagsheadbucks.com

Visit: www.nagsheadbucks.com

Beautifully restored, AA 4 star, 15th Century coaching inn with rosette awarded restaurant with low oak beams and large fireplaces. Stylish refurbished bedrooms with many amenities and private en-suites. Free parking.

4 Double Rooms from £95

1 Twin Rooms from £95



Old Meadows

**** Silver

10 Chapman Lane
Flackwell Heath
Buckinghamshire HP10 9AZ

Tel: 01628 522177

E: bobpearce1@btinternet.com

Visit: www.bedandbreakfast-highwycombe.com

A comfortable and relaxing place to stay offering the opportunity to explore many places of interest in the local area including the Chilterns and River Thames. Continental breakfast included. Full English £5 per person.

1 Double Room (ensuite) from £45 to £55

1 Twin Room (shared bathroom) from £35 to £45



Rickyard Cottage

Denner Hill
Great Missenden
Buckinghamshire HP16 0HZ

Contact: Mrs Sue Davis

Tel: 01494 488388

E: richard@rickyard.plus.com

Visit: www.rickyardcottage.co.uk

The barn beside our characterful cottage offers modern luxurious facilities with farmhouse hospitality. Very peaceful with own terrace and courtyard garden, super king bed with space to relax and work.

1 Double Room

Single Occupancy from £55 to £65

Double Occupancy from £75 to £90



Rosling House

Radnage Common Road
Radnage
Buckinghamshire HP14 4DD

Tel: 01494 482724

Visit: www.roslinghouse.co.uk

A friendly comfortable family home situated high in the Chiltern Hills- ' Red Kite Country '. A high standard of service with locally sourced food where possible, free WIFI, off-road parking in quiet rural location. Walkers and cyclists welcome.

1 Double Room from £50 to £70

1 Twin Room from £45 to £65



Wild Hatch

**** Gold

Coleshill Lane, Winchmore Hill
Amersham
Buckinghamshire HP7 0NT

Contact: Mr & Mrs Morris

Tel: 01494 722611

E: di.john.wildhatch@btinternet.com

Enjoy a warm welcome in a peaceful and pretty Chiltern village. Wild Hatch has comfortable bedrooms and en suite shower rooms. Complimentary WIFI and parking available. Easy access to motorways, Heathrow and trains to London.

1 Double Room from £45 to £65

1 Family Room from £75



Guest Houses and B&B's Continued...

Malvern Guest House

Fernie Fields, Off New Road
High Wycombe
Buckinghamshire HP12 4SP

Tel: 07792815846

Visit: www.malvernguesthouse.co.uk

If you need convenient accommodation with the comforts and sophistication of a hotel but with the intimate service and price tag of a B&B. Look no further as Malvern Guest house has it all.

1 Single Room

1 Double Room

1 Twin Room

Please contact Malvern Guest House for room rates



The Crown at Radnage

City Road
Radnage
Buckinghamshire HP14 4DW

Tel: 01494 482301

E: resevations@crownradnage.co.uk

Visit: www.crownradnage.co.uk

Accommodation away from the main building for that extra bit of peace and quiet in the grounds of the pub. Each room is well appointed with Hypnos beds, large wet room and 'Nesspresso' coffee machine.

For room rates please contact The Crown at Radnage
Reservations Team



Clovers B&B

13 Sawpit Hill, Hazlemere
High Wycombe
Buckinghamshire HP15 7DE

Contact: Fran

Tel: 01494 712563/ 07762565254

Visit: www.amershambandb.co.uk

A warm welcome awaits at this delightful, comfortable home situated between Amersham, Beaconsfield and High Wycombe. Both rooms have TV, hairdryer, radio alarm, WIFI and tea and coffee facilities.

Single Occupancy from £45 to £55

Double Occupancy from £60 to £70



Sausage Tree

The Sausage Tree Pub, Saffron Road
High Wycombe
Buckinghamshire HP13 6AB

Tel: 01494 452204

E: sausagetreepub@hotmail.co.uk

Visit: www.sausagetreepub.co.uk

Affordable accommodation with shared facilities in central High Wycombe. Some budget rooms are detached from the pub. All rooms come with TV, central heating and megaflo showers.

Single Room from £29

Twin Room from £45

Triple Room from £52



Seer Cottage

Speen Road
North Dean
High Wycombe
Buckinghamshire HP14 4NH

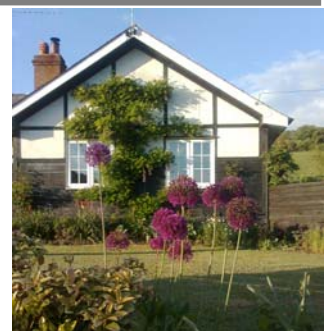
Tel: 07734 432895

E: tony48julia@gmail.com

A warm welcome awaits you at our country cottage nestled in the tranquil hamlet of North Dean. Ideal for both the business and leisure traveller with convenient access to the motorway and railway station. Facilities inc WIFI, TV and secure off street parking. Continental breakfast included. Evening meal by arrangement.

Double Room with private shower room from £35 to £55

Double Room with en-suite from £55 to £75



South Fields

Cadmore End
High Wycombe
Buckinghamshire HP14 3PJ

Tel: 01494 881976

Visit: www.bedbreakfastsouthfields.co.uk

A friendly family house, in the small Village of Cadmore End, 6 miles from High Wycombe. During your stay you can be promised a hearty wholesome English Breakfast using local produce.

Single Room from £30

Double Room with en-suite from £45 to £68

Double Room from £40 to £63



Guest Houses and B&B's Continued...

Squirrel House

129 New Road
High Wycombe
Buckinghamshire HP12 4RH

Contact: Margaret Doherty
Tel: 01494 520709/07834405814
Visit: www.squirrelhouse.co.uk

You can chill out in our comfortable lounge or, if you prefer watch SKY TV in your room. You 'll certainly get a good night 's sleep due to the quality and comfyness of our beds. Off-road parking is also provided.

Single Occupancy from £40

Twin Occupancy from £60

Double Occupancy from £50



Self Catering

Derehams Farm ****

Loudwater
High Wycombe
Buckinghamshire HP10 9RR

Tel: 01494 520964/ 07711375925
E: newmanwill@aol.com
Visit: www.derehamsfarm.com

Comfortable, newly refurbished self contained cottages adjoining farmhouse in secluded position and yet with easy access to M40. Fully equipped with dishwasher, washing machine and microwave etc. Linen and towels suppliers. 2 bedrooms. Sleeps 4-6.

£350-£550 per week



Golden Acres Farm ***

33 Green Lane, Radnage
High Wycombe
Buckinghamshire HP14 4DJ

Tel: 01494 483378
E: enquiries@goldenacresfarm.co.uk
Visit: www.goldenacresfarm.co.uk

A well-equipped self catering suite for single or twin, consisting of kitchen, bathroom and bed-sitting room. Cosy setting on family farm with beautiful views and walks, situated in the rural Chilterns, 6 miles from High Wycombe. 1 bedroom. Sleeps 1-2.

Low Season from £185

High Season from £200



High Beeches Cottage ***

High Beeches, Lee Common
Great Missenden
Buckinghamshire HP16 9NE

Contact: Mrs Brumpton
Tel: 01494 837246
E: richard@rickyard.plus.com

This cottage adjoins the house with its own courtyard entrance. Metropolitan and Chiltern railway lines 4 miles from house. London, Windsor and Oxford approx 1 hour. Beautiful village location with well stocked local shop. Very secure parking. 1 bedroom, sleeps 2.

Low Season from £295 per week

High Season From £350 per week



Hilborough **

Mill Lane
Chalfont St. Giles
Buckinghamshire, HP8 4NX

Contact: Mr and Mrs Bentall
Tel: 01494 872536
E: pbentall@btopenworld.com

Self-contained exclusive flatett attached to house. Patio area with access to colourful garden. Sleeps 1-2. Kitchenette with fridge and freeze compartment, cooker and microwave. All linen provided. Shower room, electricity and central heating. Colour TV.

1 Annex single bedroom

From £150 per week



Inglenook Cottage ****

Oxford Street, Lee Common
Great Missenden
Buckinghamshire HP16 9JY

Tel: 01494 837798
E: lowerbassibones@yahoo.co.uk
Visit: www.discover-real-england.com

Period village cottage in area of outstanding natural beauty in the Chiltern Hills consisting of lounge, conservatory, dining room, fully fitted kitchen, double bedroom, twin bedroom, bathroom/WC, WIFI, pretty cottage gardens and patio. Sleeps 2-4.

From £345 to £545 per week



Self Catering Continued...

Chalkdell

Road Farm, Aylesbury Road
Great Missenden
Buckinghamshire HP16 9LS

Contact: Mrs Wendy Gray
Tel: 01494 862413
E: chalkdell.roadfarm@gmail.com

Valley views and relaxing comfort welcome guests to Chalkdell on a mixed, working, family farm with Skylarks, Red Kites, bluebells and more. 1 Cottage, 3 bedrooms, sleeps 2-6. Weekend and week day breaks available.

Low Season £450 per week

High Season £700 per week



Lower Bassibones Farm ****

Lee Common
Great Missenden
Buckinghamshire HP16 9LA

Tel: 01494 837798
E: lowerbassibones@yahoo.co.uk
Visit: www.discover-real-england.com

Beautifully converted, self contained barn in a quiet, secluded location in the Chiltern Hills. Magnificent beamed living area, retaining traditional features coupled with all modern conveniences. Fully equipped kitchen, shower room, office facilities, private patio and large garden. Sleeps 2-4.

£395 to £645 per week



Caravan and Camping

Highclere Farm Park

Newbarn Lane, Seer Green
Beaconsfield
Buckinghamshire HP9 2QZ

Tel: 01494 874505
E: highclerepark@aol.com
Visit: www.highclerefarmpark.co.uk

Countryside Park near railway to London, 60 electric hook-ups (at extra cost). Tents, motor vans, touring caravans welcome. Open all year except February. Children's play area, launderette, luxury showers and washing up area. WIFI, Freeview and Satellite boxes available. Dogs on lead welcome.

Caravans from £17 per night

Tents from £15 per night



Hostels

Jordans YHA

Welders Lane, Jordans
Beaconsfield
Buckinghamshire HP9 2SN

Tel: 0845 3719523
E: jordans@yha.org.uk
Visit: www.yha.org.uk

A simple self catering wooden lodge set in its own grounds with ample car parking, a large garden, patio and BBQ area. Individuals and groups welcome. Lounge and fully equipped kitchen available to prepare meals. All linen provided. WIFI available.

Rooms from £41

Beds from £18



Accommodation Booking Service

There is a great choice of accommodation in High Wycombe and the surrounding area to suit all tastes and budgets. The High Wycombe Tourist Information Centre offers an accommodation booking service for a fee of just £5. Whatever your agenda our experienced and knowledgeable team will help find the right accommodation for you.

Please contact us with your requirements by phone, post, email or for a more personal service visit our office

High Wycombe Tourist Information Centre
High Wycombe Library Foyer
5 Eden Place
High Wycombe
Buckinghamshire
HP11 2DH

Phone: 01494 421 892

Email: email_enquiries@wycombe.gov.uk

Visit: www.visitbuckinghamshire.org

Opening Times

Tuesday to Friday 9.30am to 5.30pm
Saturday 9.30am to 4pm

Our Grading Explained

Purple Stars *

Accommodation marked with purple stars have been graded by Enjoy England or the AA quality assessment scheme and feature in the Visit Buckinghamshire guide. This accommodation is visited and inspected annually. The star rating scheme as shown below displays what standards visitors can expect when they arrive. Comments and complaints that have not been resolved with the proprietor can be made in writing to Enjoy England or the AA.

Blue Stars *

Accommodation marked with blue stars have been inspected and graded accordingly by a quality assessment organisation, however are not featured in the Visit Buckinghamshire guide. Comments and complaints that have not been resolved with the proprietor can be made in writing to the assessment organisations.

No stars

To the best of our knowledge accommodation without stars have not been assessed or graded. Comments or complaints about this accommodation should be addressed solely with the business proprietor.

Rating

- * Simple, practical, no frills
- ** Well presented and well run
- *** good level of quality and comfort
- **** Excellent standard throughout